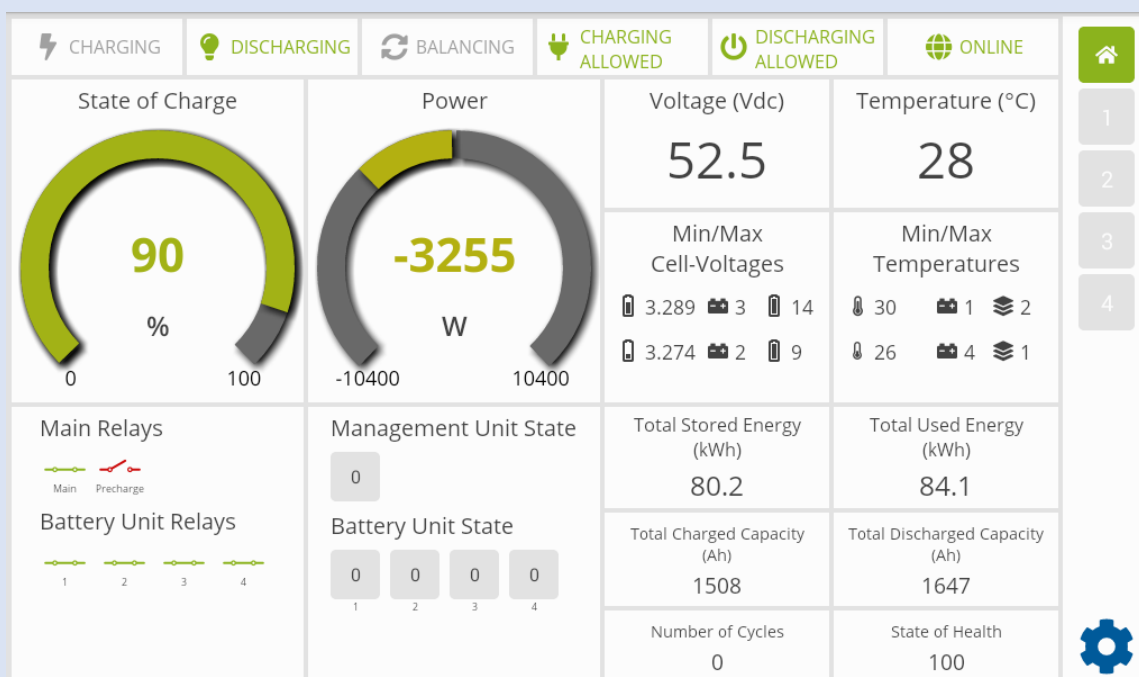


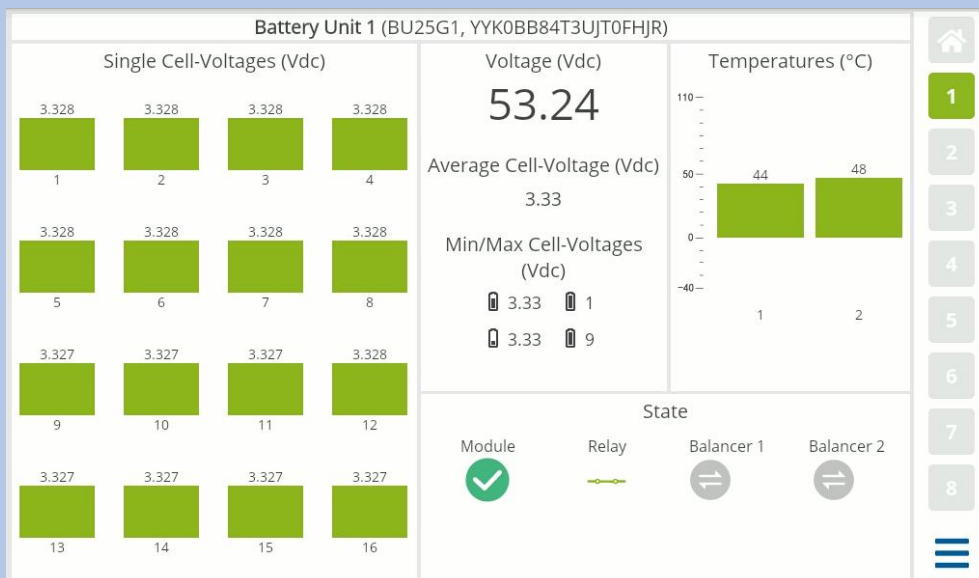
# BMS - Battery Management System

All information at first sight.

The Battery Management System (BMS) is the central control unit of the HomeHub. It displays the most important information and processes at first glance and gives a good overview about the energy flow.

The 7" coloured display combines the most essential information on point and allows not only to get an overall overview of the system status and its health but also of the single battery modules and its single cells.





A battery module contains two battery blocks with each eight cells. The more detailed view into the single Battery Modules allows a closer look at each cell, its voltage and the temperature of each Battery block.

Last but not least the BMS allows many different settings to personalize your HomeHub:

- **Expert Mode:** access more settings
- **Display:** set brightness & screen saver
- **Language:** choose your language
- **Timezone:** choose your timezone
- **Update:** always receive the latest update
- **Modules:** add or remove modules
- **Inverter:** choose your preferred inverter to work with
- **Battery:** change the DoD to your preferred output (expert mode necessary)
- **Network:** connect your HomeHub to your network to connect different devices and to enable the remote service

